

Main and Optional Remote Control Panels A-4800M or A-4800R



A-4800M or A-4800R
Shown in enclosure BB--48

Description: The 4800 Digital Emergency Communication System is designed to provide fully supervised, two-way voice communication, between each call station and up to 5 Control Panels. An internal modem, connected to a Analog "POTS" dedicated telephone line, provides an automated-timed dial-out capability to an alternate monitoring location. A single Control Panel can support 1-8 call stations, the system can support 255 stations utilizing expansion switches (ES-4808). Panels are to be mounted in enclosure (BB-48).

Operation: When a call is initiated at the Call Station (4800V), this signals the alarm to display at the Main and Remote Control Panels. Sound will initiate as well as a detailed description of where the call is coming from on the Control Panel screen.

Modem Operation (Available on Main Control Panel ONLY): The 4800 Digital Emergency Communication System incorporates a programmable automatic dial feature to connect to an analog, *cellular or *VOIP telephone connection. In the event that an incoming call is not answered, at any of the Control Panels in a preset amount of time, the 4800 system will dial a pre-programmed phone number to directly connect the Call Station to a monitoring location.

Mounting: The Control Panel is mounted inside a separately ordered wall enclosure (BB-48). The flush mount in wall enclosure assembly consists of a separate enclosure (18.25" W, 18.25" H, Enclosure Depth 3.25") and a locking hinged Frame/Door assembly. The enclosure chassis shall be mounted with the "Top of Box Arrow" pointing up, and approximately 1/8-1/4" below the finished wall surface. The reversible Door assembly can be adjusted up to approximately 1" away from the face of the chassis surface.

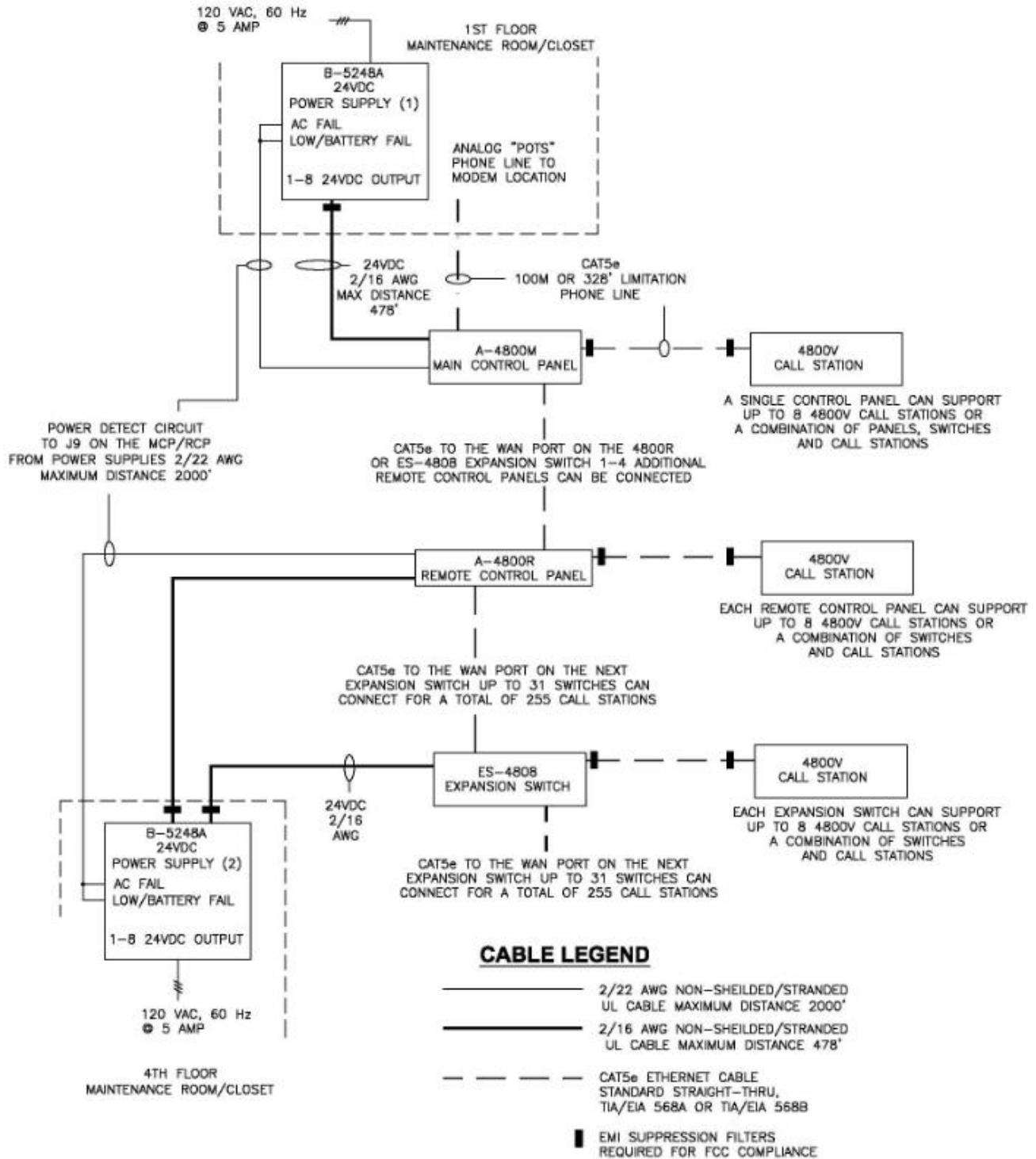
Engineering Specifications: The contractor shall furnish and install the CORNELL A-4800M with optional A-4800R Remote Panels as indicated on the plans. Panels shall be programmed to building specifications. Panels shall be mounted in CORNELL enclosures, BB-48, to be ordered separately.

Technical Information:

- Power Requirements: 24VDC
- Operating Environment: 50-120°F Indoor Non-condensing
- Physical Dimensions of the Enclosure, Panel Mounted Inside: Door: 20"W, 20"H, Enclosure Depth 3 1/4", 18 1/4"W, 18 1/4"H
- Mounting: Follow instructions provided in installation manual
- Wiring: Cat5e Ethernet cabling for Control Panel, Switch and Call Station Connections

***With cellular or VOIP connections, an additional onsite interface connection is required.**

4800 SYSTEM RISER



CORNELL COMMUNICATIONS, INC.

Milwaukee, Wisconsin USA • 800-558-8957 • 414-351-4660 • Fax 414-351-4657
www.cornell.com • sales@cornell.com

